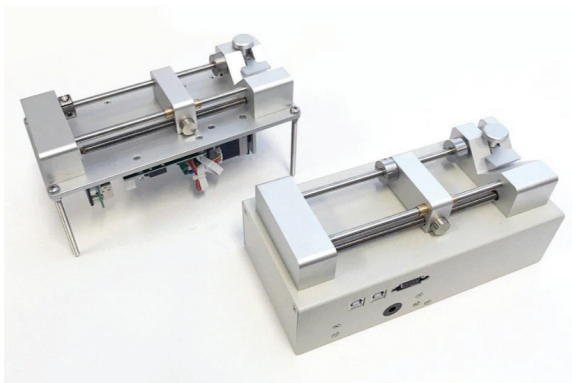


SKE OEM Module Data Sheet



The SKE OEM syringe pump is available in both Full Case Module and Open Case Model

TECHNICAL SPECIFICATIONS

Mode	Infuse/Withdraw
Accuracy	$\pm < 0.35\%$
Reproducibility	$\pm < 0.05\%$
Syringe Size (Min/Max)	10 μ L to 50mL
Syringe Type	Plastic, Glass, and Stainless Steel
Syringe Flow Rates	See Syringe Library for Min & Max Flow Rates on Website
Minimum Flow Rate	0.00002 μ L/min (with 10 μ L syringe)
Maximum Flow Rate	140 mL/min (with 50mL syringe)
Linear Force	20lb (9.07kg)
Display	None
Connectivity	USB-B, RS232
System Dimensions	8.6 x 4.31 x 3.7 inches (22 x 10.5 x 9.5 cm)
Power	110/200 VAC or 12-24 VDC
Weight	5lbs (2kg)
Motor Drive	1.8° Stepper Motor with Micro-stepping
Step Resolution	0.195 μ m/step
Operating Temperature	4°C to 40°C (40°F to 104°F)
Storage Temperature	-10°C to 70°C (14°F to 158°F)
Humidity	20% to 80% RH, non-condensing
Installation Category	II
Regulatory Compliance	CE, RoHS, REACH, FCC